

dirt-trapping mats

Always walk on the safe side



Table of contents

- **Outdoor area**
 - Scriper 4
 - KoBe 5
 - Step In 6
 - Looper 7
- **Transition area**
 - Two in One 9
- **Indoor area**
 - Dirt-trapping mat PP 11
 - Olefin 12
 - Eazycare 13
 - Eazycare Pro 14
 - Karaat 15
 - Classic 16
 - Logomats 17
 - Logomats standard 18
 - Logomats premium 19
 - Logomats HD 20

ICON legend

In order to make it easier for our customers to find the right products, we assigned icons to our mats showing the benefits and main properties at a glance.



FINE DIRT

DURABLE

TRANSITION AREA

WASHABLE

DIRT-TRAPPING MATS

LOGOMATS

STANDARD

SERVICE

CUSTOMIZATION

COARSE DIRT

PVC

QUALITY

MOISTURE ABSORPTION

COLOR VARIETY

GUARANTEE

DIRT ABSORPTION

ROLLS

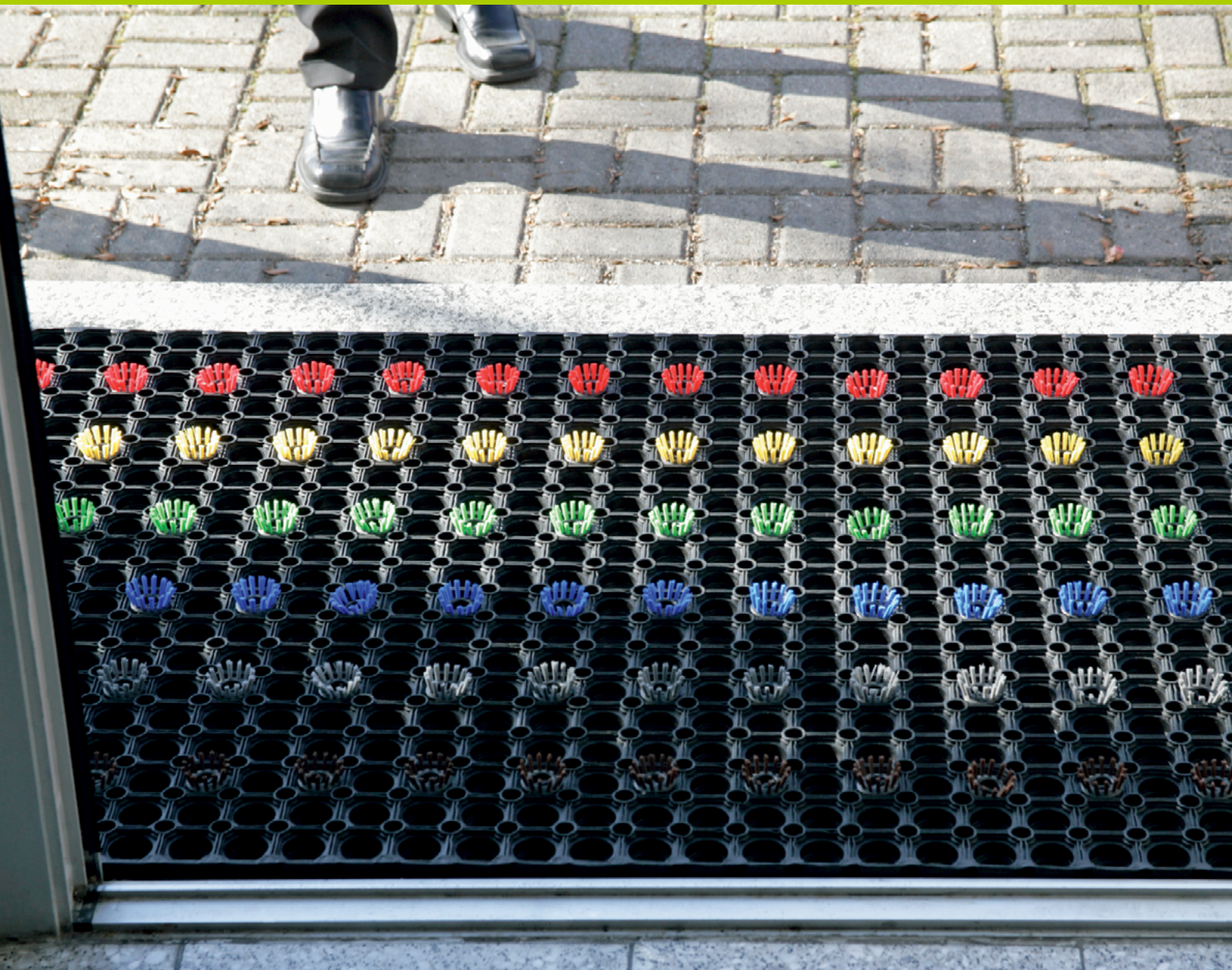
OUTDOOR AREA

FAST

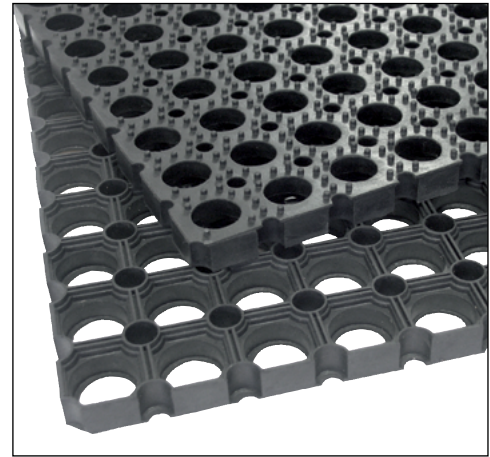
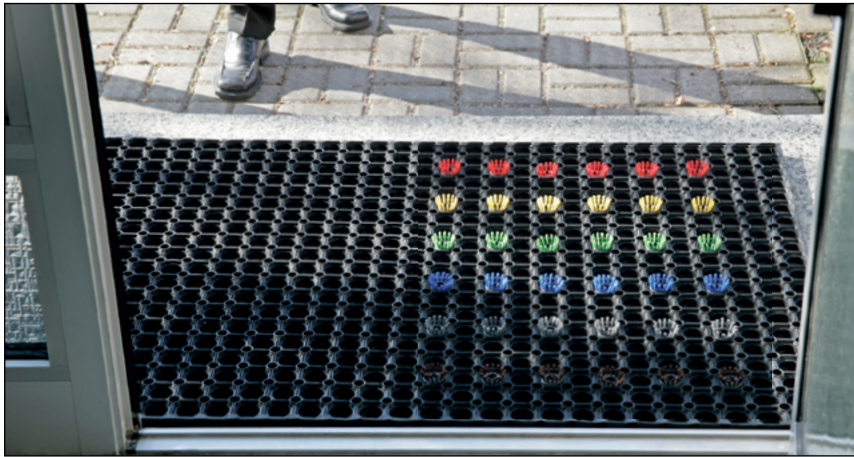
DELIVERY



■ Outdoor area



Scriper



Applications

The rubber mats Scriper can be used in all entrance areas. Especially in the winter with extreme weather conditions the mats guarantee slip-resistant.

The benefits at a glance

- Made of rubber, 100 % recyclable
- Hard-wearing and dirt repellent, also suitable for wet surfaces
- Effective drain-through due to rubber studs in the base
- Available with circular brushes, for better soil removal from shoe soles
- Due to the high net weight the mats stay on place
- Ringmats provide exceptional durability
- For large surfaces the mats can be combined with connectors

Specifications

Sizes: 40 x 60 cm, 80 x 120 cm,
100 x 150 cm
Special sizes and shapes on request

Thickness: 22 mm

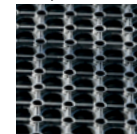
Weight: 9,6 kg/m²

Material: 100 % rubber

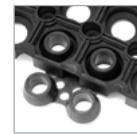
Hardness: 50° Shore A +/- 5

Accessories: adapter, brush

Color:



black



adapter

Brush:



blue



yellow



black



green

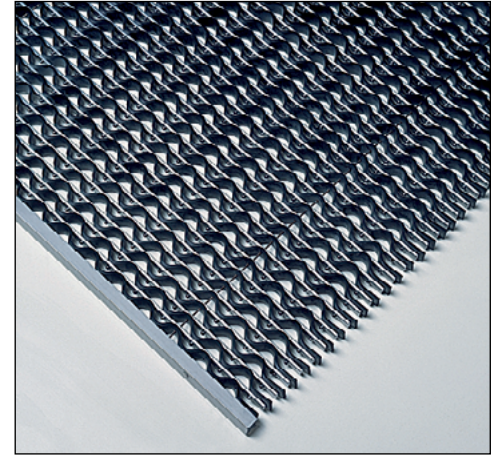
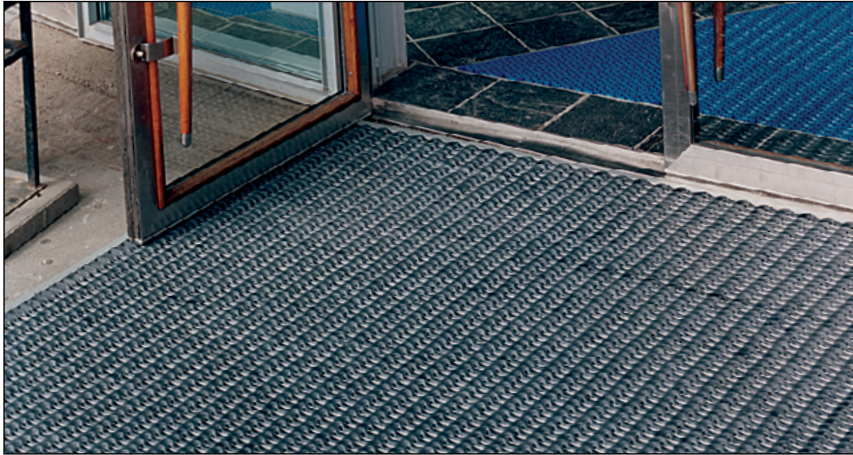


grey



red

KoBe



Applications

The KoBe™ dirt-trapping mat is suitable for outdoor use. The mat can be turned over if needed and are thereby used twice as long.

The benefits at a glance

- Made of aluminium bars and rubber strips
- The rubber is flexible and temperature-resistant
- Hard-wearing and durable
- Stabilized with stainless steel wire, whereby the rolling up of the mat is made possible
- Reduces cleaning expenses by up to 80 %
- Less wear of carpeting and flooring
- For loose laying there is a beveled frame, for fixed laying a modular angle aluminum frame
- Usable on both sides
- Available with or without frame

Specifications

Sizes: 58,5 x 38,5 cm, 78,5 x 58,5 cm,
98,5 x 58,5 cm, 98,5 x 78,5 cm,
98,5 x 98,5 cm, 118,5 x 78,5 cm,
158,5 x 78,5 cm

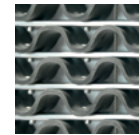
customized size to max. 200 x 500 cm

Thickness: 22 mm

Weight: 12,0 kg / m²

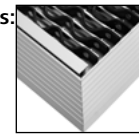
Material: aluminium and rubber

Color:

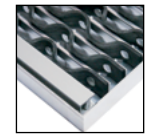


aluminium and black rubber

Accessories:



beveled
frame



casting
frame

Step In



Applications

StepIn is suitable for indoor and outdoor areas with high pedestrian traffic. Even with snow and rain in all building entrances an ideal flooring.

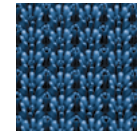
The benefits at a glance

- Made from recycling Polyethylene (LDPE)
- High absorption of moisture, rough dirt, sand, etc.
- Effective drain-through and aeration
- Step In is resistant to salt
- Hard-wearing and durable
- Resistant to temperatures from -40 °C up to +55 °
- Step In is UV resistant, therefore also suitable for terraces and balconies
- Can be expanded in all directions

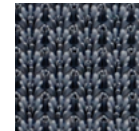
Specifications

Sizes: 57 x 86 cm
Thickness: 17 mm
Weight: 3,0 kg/m²
Material: Polyethylene (LDPE)

Color:



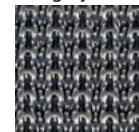
metallicblue



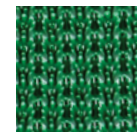
darkgrey



brown



lightgrey



green

Looper



Applications

Looper is especially for highly frequented business and house entrance, as well as for entrance areas in public institutions and also for industrial enterprises.

The benefits at a glance

- Extremely high dirt holding capacity
- Vinyl-coated polyester loops provide exceptional durability
- Resists heavy mechanical strain
- Shows few signs of wear
- Slip resistant, reduces trip hazards due to its enlarged edges
- Even at low temperatures the back remains soft

Specifications

Sizes: Mats: 60 x 91 cm, 91 x 150 cm,
122 x 183 cm, 122 x 244 cm
Rolls: 91/122 cm x max. 18,3 m

Thickness: 9 mm

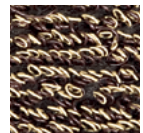
Weight: 3,8 kg / m²

Material: vinyl-coated polyester loops with vinyl bottom

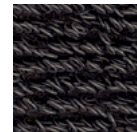
Color:



grey



brown



black

■ Transition area



Two in One



Applications

The Two-in-One mats are the ideal solution for roofed outdoor and indoor areas with heavy pedestrian traffic. The fully synthetic mats ensure that your floor stays clean and dry.

The benefits at a glance

- Made of long-fibre olefin with vinyl backing, additionally with hard polypropylene loops, which reliably remove the shoes from the dirt
- Excellent dirt-trapping capacity and are particularly hardwearing
- Fast-drying and odourless
- Special vinyl backing prevents curling
- The border prevents the risk of tripping
- Extremely hard-wearing

Specifications

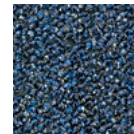
Sizes: 60 x 90 cm, 91 x 150 cm,
122 x 244 cm
Rollware on request

Thickness: 9 mm

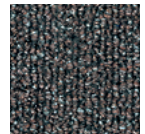
Weight: 3,8 kg/m²

Material: Long-fibre olefin with hard polypropylene loops and with vinyl bottom

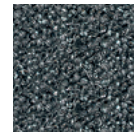
Color:



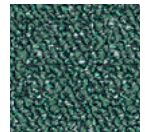
blue



brown

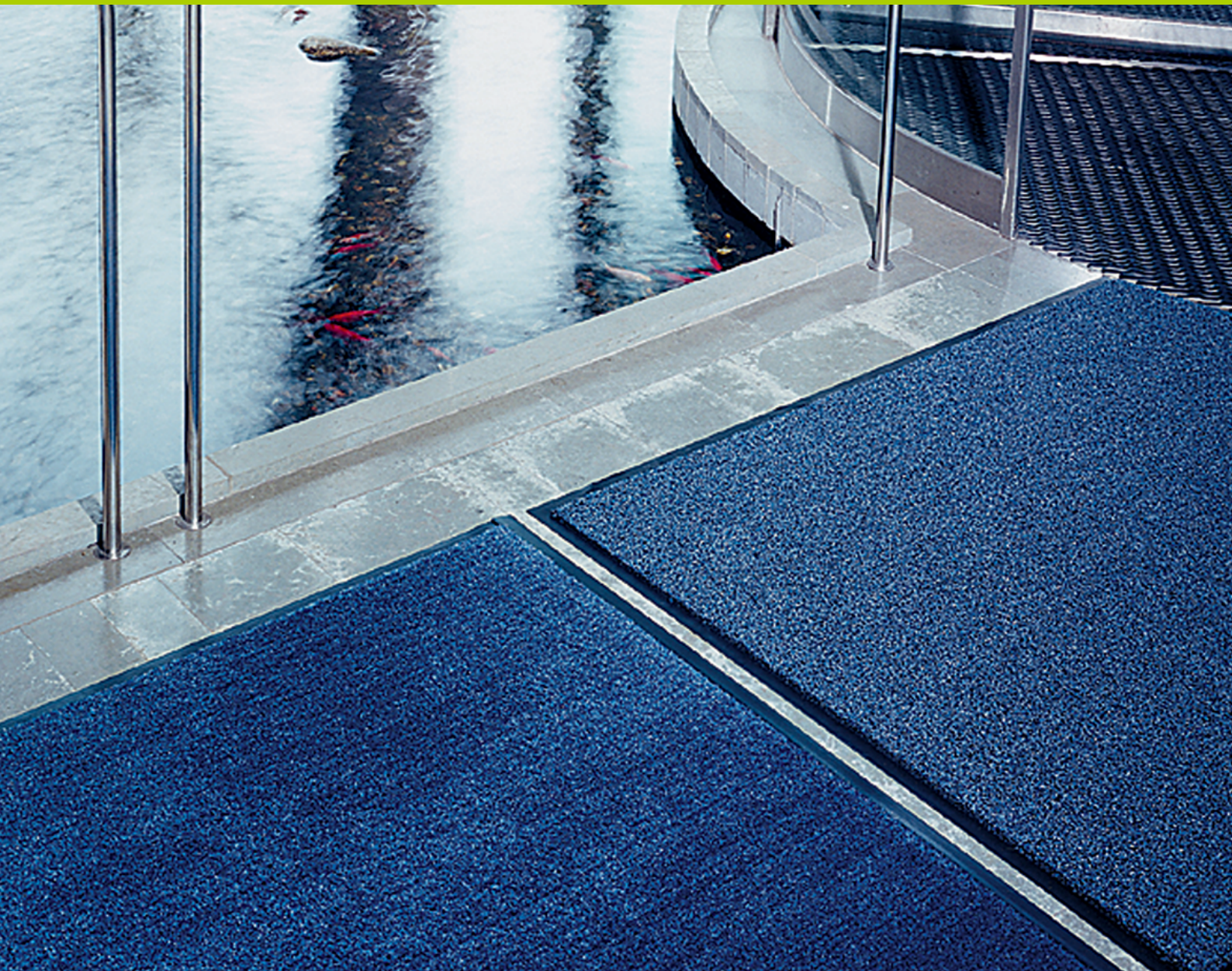


grey



green

■ Indoor area



Dirt-trapping mat PP



Applications

Dirt-trapping mat PP are made of polypropylene with a vinyl backing. The mats are ideal for indoor use with normal traffic.

The benefits at a glance

- Made of polypropylene with vinyl backing
- Excellent layflat properties
- Good dirt-trapping capacity
- Is UV-resistant and holds up to 4 liters per m²
- The surface material of polypropylene is very robust

Specifications

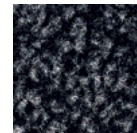
Sizes: 60 x 90 cm, 90 x 120 cm,
90 x 150 cm, 120 x 180 cm

Thickness: 9 mm

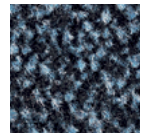
Weight: 3,0 kg/m²

Material: polypropylene with vinyl bottom

Color:



anthracite



blue

Olefin



Applications

The Miltex Olefin mats provide the ideal solution for indoor use in areas with heavy pedestrian traffic. The fully synthetic mats ensure that your floor stays clean and dry and also protect the flooring from premature wear.

The benefits at a glance

- Made of long-fibre Olefin with vinyl backing
- Excellent dirt-trapping and water capacity
- Water retention capacity of up to 7 l per m², fast-drying and odourless
- Extremely hard-wearing thanks to robust vinyl backing
- UV resistant

Specifications

Sizes: Mats: 60 x 91 cm, 91 x 150 cm, 122 x 183 cm, 122 x 244 cm
Rolls: 91/122/183 cm x max. 18,3 m

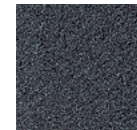
Thickness: 9 mm
Weight: 3,0 kg / m²
Material: Olefin with vinyl backing
Color:



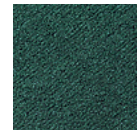
blue



brown



grey

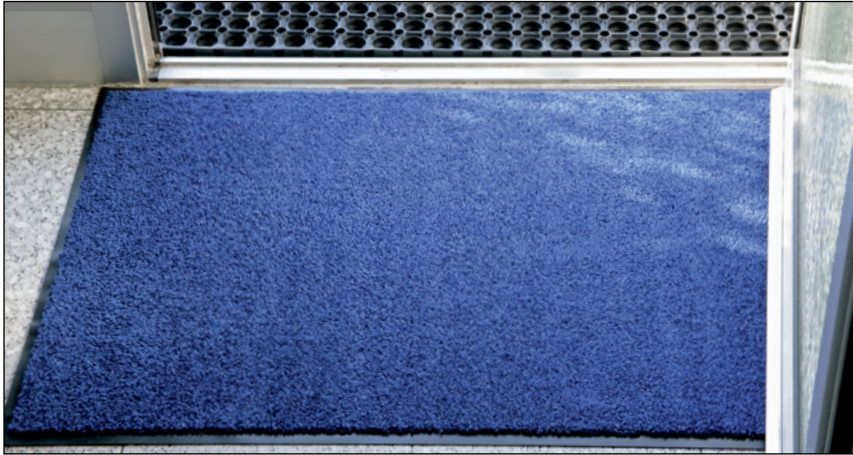


green



wine red

Eazycare



Applications

Eazycare mats are ideally suited for building interiors and entrances with heavy foot traffic. The pile fibre surface perfectly absorbs even large quantities of dirt and moisture.

The benefits at a glance

- Hard-wearing, durable polyamide pile
- Optimum absorption of dirt and moisture
- Color and light-fast
- Extremely hard-wearing back
- Slip-resistant
- 100% polyamide
- 11 brilliant colors to choose from
- UV-resistant
- Washing machines and tumble dryers up to 30C°

Specifications

Sizes: 40 x 60 cm, 60 x 90 cm,
91 x 150 cm, 120 x 180 cm

Thickness: 9 mm

Weight: 3,0 kg/m²

Material: 100% polyamide with vinyl backing

Color:



grey



light green



red



orange



dark blue



beige



pink



purple



red

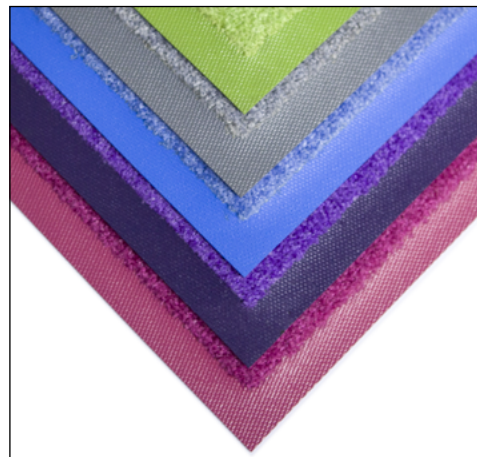


noir



bleu

Eazycare Pro



Applications

Eazycare mats are ideally suited for building interiors and entrances with heavy foot traffic. Thanks to their high dirt and moisture absorption capacity and the colour-coordinated borders, the mats meet even the highest demands and create a harmonious look.

The benefits at a glance

- Wear-resistant and sturdy nitrile rubber back
- washable at up to 60°C
- Optimum absorption of dirt and moisture
- Color and light-fast
- Slip-resistant
- 100% polyamide
- Colour-coordinated borders
- UV-resistant

Specifications

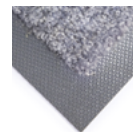
Sizes: 40 x 60 cm, 60 x 90 cm,
91 x 150 cm, 120 x 180 cm

Thickness: 9 mm

Weight: 3,0 kg/m²

Material: 100% polyamide with nitrile rubber backing

Color:



grey



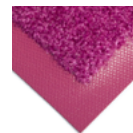
purple



bleu

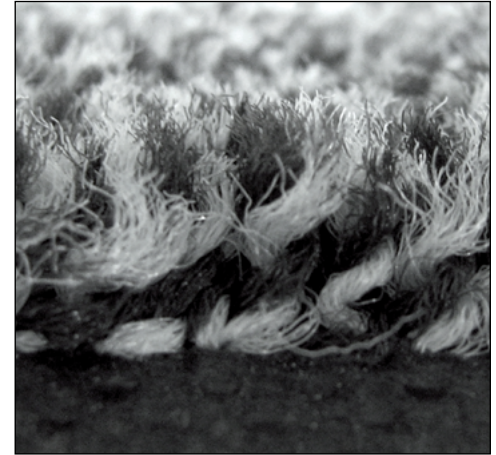


green



pink

Karaat



Applications

The Karaat series is very versatile due to its many high-quality properties. They are suitable for department stores, exhibition halls, offices as well as commercial buildings and all heavily frequented entrance areas. They are also able to cope with larger amounts of dirt, such as by petrol stations and in the industry.

The benefits at a glance

- Top-quality high-twist nylon fibres, hardly inflammable Bfl/S1
- High dirt absorption capacity
- Moisture repellent, prevents unpleasant smells
- 100 % nitrile-rubber backing
- Hard-wearing and slip-resistant
- Anti-static due to carbon fibres
- Colors are UV-resistant
- Reinforced rubber band
- Oil-resistant
- Easy to clean, washable at up to 60 C°

Specifications

Sizes: 60 x 85 cm, 85 x 150 cm,
115 x 180 cm, 115 x 240 cm
special sizes are possible

Thickness: 9 mm

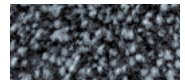
Weight: 2,8 kg / m²

Material: Nylon with nitrile-rubber backing

Color: (Standard)



anthracite



grey

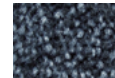


brown

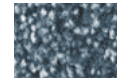


blue

Color: (Special)



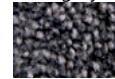
slate grey



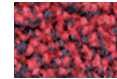
blue steel



black



black mink

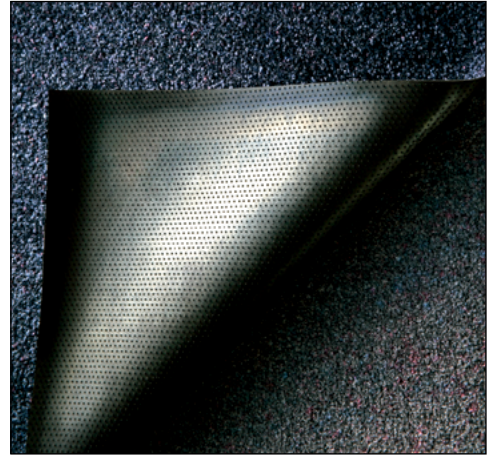


red



clear red

Classic



Applications

The mats are suitable for department stores, exhibition halls, offices as well as commercial buildings and all heavily frequented entrance areas. They are also able to cope with larger amounts of dirt, such as by petrol stations and in the industry. Due to their anti-static properties they can also be used in static-sensitive EDP areas.

The benefits at a glance

- Top-quality high-twist nylon fibres
- Hardly inflammable Bfl/S1
- High dirt absorption capacity
- Moisture repellent, prevents unpleasant smells
- Nitrile rubber backing, plain or with grips
- Hard-wearing and slip resistant
- Anti-static due to carbon fibres
- Anti-stain finish
- Easy to clean, washable at up to 60°C

Specifications

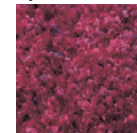
Sizes: 60 x 90 cm, 85 x 150 cm,
85 x 300 cm, 115 x 175 cm,
115 x 200 cm, 115 x 240 cm,

Thickness: 9 mm

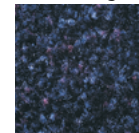
Weight: 2,8 kg/m²

Material: nylon with nitrile rubber backing

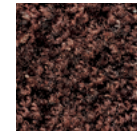
Color:



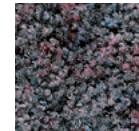
burgundy berry



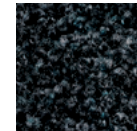
midnight blue



autumn brown



stardust grey



dark granite



black opal

Logomats



Applications

Classic Logo-mats are the ideal solution for hotels, department stores and offices. Due to their anti-static properties they can also be used in static-sensitive EDP areas. The logo mats can be used for private entrances and for heavy foot traffic areas.

The benefits at a glance

- Top-quality high-twist nylon fibres, hardly inflammable Bfl/S1
- 32 colors for your individual logo on the mat
- Stain Stopper™ Technologie, prevents color loss
- 100% nitrile-rubber backing resistant to greases, lubricants and oils
- Extremely hard-wearing and slip-resistant
- Anti-static due to carbon fibres
- Reinforced rubber band
- Available from a quantity of 1 piece per order
- Easy to clean, washable at up to 60 C°

Specifications

Sizes: 60 x 85 cm, 75 x 85 cm,
85 x 115 cm, 85 x 150 cm,
115 x 180 cm, 115 x 200 cm,
115 x 240 cm, 150 x 200 cm,
150 x 240 cm, 150 x 300 cm,
200 x 200 cm, 200 x 300 cm

Special sizes are possible
max. 200 x 550 cm

Thickness: 8 mm

Weight: 2,6 kg / m²

Material: Nylon with nitrile rubber backing

Color: See color chart for selection

Logomats standard

66 colors printed on a high pile allow you to display your logo.







Miltex GmbH

Ohmstr. 2
68519 Viernheim
Germany

T +49 - 6204 - 70869 - 0
F +49 - 6204 - 70869 - 29
info@miltex.de
www.miltex.de